

Smoke Gets In Your Eyes - Session 1 (Bass Clef)

Session 1 focusses on the opening 2 phrases of the melody (shown below), which is a repeated melodic pattern.



I found it useful to deconstruct this phrase into simple patterns which relate to the home key major scale. This process is outlined below.

Step 1: removing the 1st note (the minim)

3



Step 2: the scale ascending in 3rds

4



Step 3: the scale descending in 3rds

6



Step 4: Now seeing the 4 note cell as 2 pairs, the 1st pair ascending a 3rd and the 2nd pair descending a 3rd

8



Step 5: By descending between the pairs rather than ascending we can change the overall direction of the exercise. This now gives us the same 4 note cell which we find in the opening phrases of the melody, but transposed through the full scale.

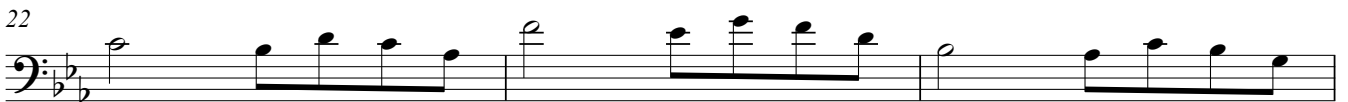
10



Step 6: In the example above the 4 note cell is transposing itself through the diatonic cycle of 6ths. Or if you prefer, the starting note of each 4 note cell is a 3rd lower than the previous starting note. As always, it's useful to practise transposing phrases through various different cycles. Below is an example of the phrase being transposed through the diatonic cycle of 4ths.



You will notice that by transposing the phrase round the cycle of 4ths we now find the same patterns which occur in the opening phrases of the melody. It's also useful to try the same exercise but this time including the 1st note of the phrase, as shown below.



Having familiarised ourselves with the pattern in this way it's interesting to see how this might effect the way we improvise based on this simple 4 or 5 note cell. Below is an example, in which I have applied the cell over a I VI- II- V cadence

